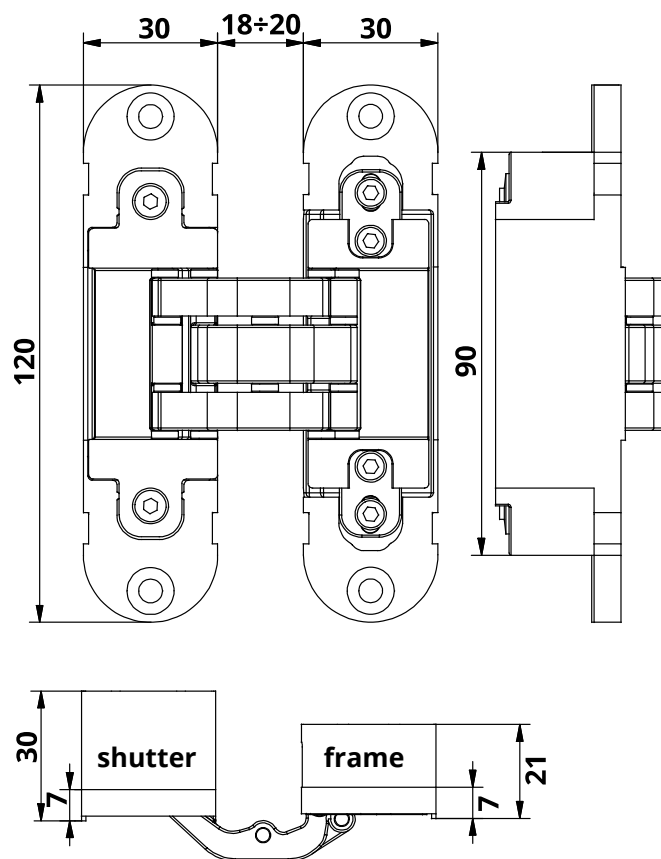


TECHNICAL SHEET INVISACTA IN305

Concealed hinge for flush doors



Technical features

- The hinge is suitable to be installed on doors and frames in wood and aluminium.
- Material of hinge: zamak.
- Material of casing: thermoplastic polymer.
- Aluminum caps available to conceal the screws.
- The hinge can be fitted right and left and grants the reversibility of the door, both on vertical and horizontal axis.
- Movement on 7 junction fulcrums equipped with bearing in plastic HT with high resistance and long life.
- Equipped with 3-way adjustments that can be settled by means of just one 3 mm hex-spanner.
- Compatible with millings of IN300 and IN303 hinges.
- Patented EP-B- 2719851.

Technical data

Capacity*	40 Kg.
Hinge height	120 mm
width shutter side	30 mm
width frame side	30 mm
Depth shutter side	30 mm
Depth frame side	21 mm
Door opening angle	180°
Side adjustment	± 1 mm
Height adjustment	± 2 mm
Depth adjustment	± 1 mm

* Tested with 90x210 cm doors - For more information on the number of hinges to be used according to the weight and dimension of the door, please see the loading charts available on the website www.otlav.it.

Accessories

Aluminium jig	MU300120G002
Nylon jig	MUINV500G002
Door alignment device	AI300120
Caps GC300010	<i>Same finishing than hinges</i>
Fixing plate	NP120040H502

Finishing

The entered images are only on illustrative purpose.
Features and colours may differ from what represented.
Other finishing on demand.

IN305120V702

Satinized silver plated



IN305120H002

Zinc plated

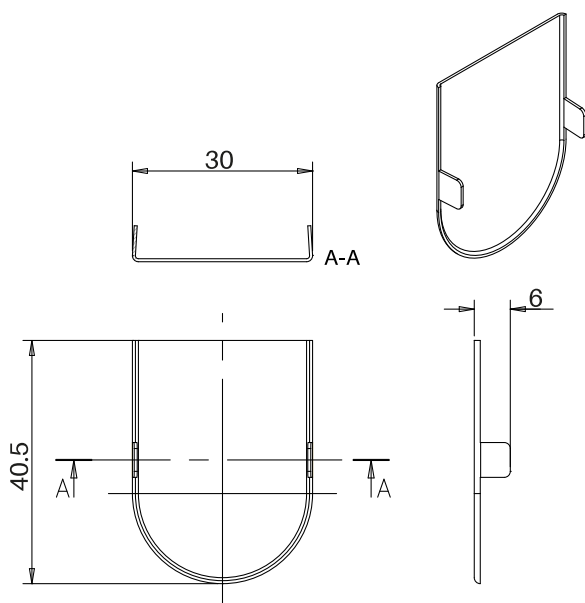


IN305120VN02

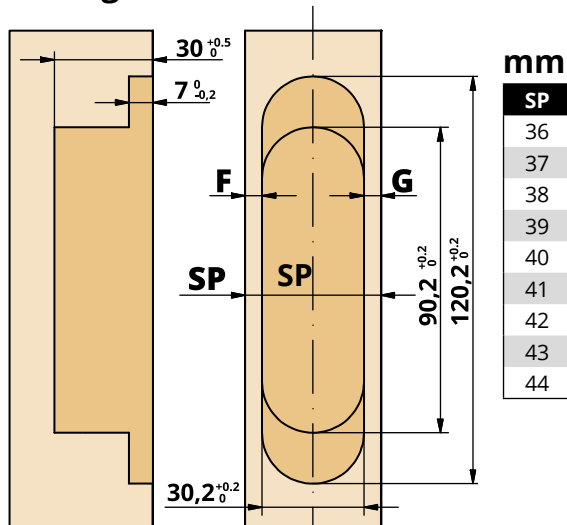
Satinized Nickel Plated



Caps



Milling on the shutter



mm

SP	F	G
36	3	3
37	3,5	3,5
38	4	4
39	4,5	4,5
40	5	5
41	5,5	5,5
42	6	6
43	6,5	6,5
44	7	7

Milling on the frame

