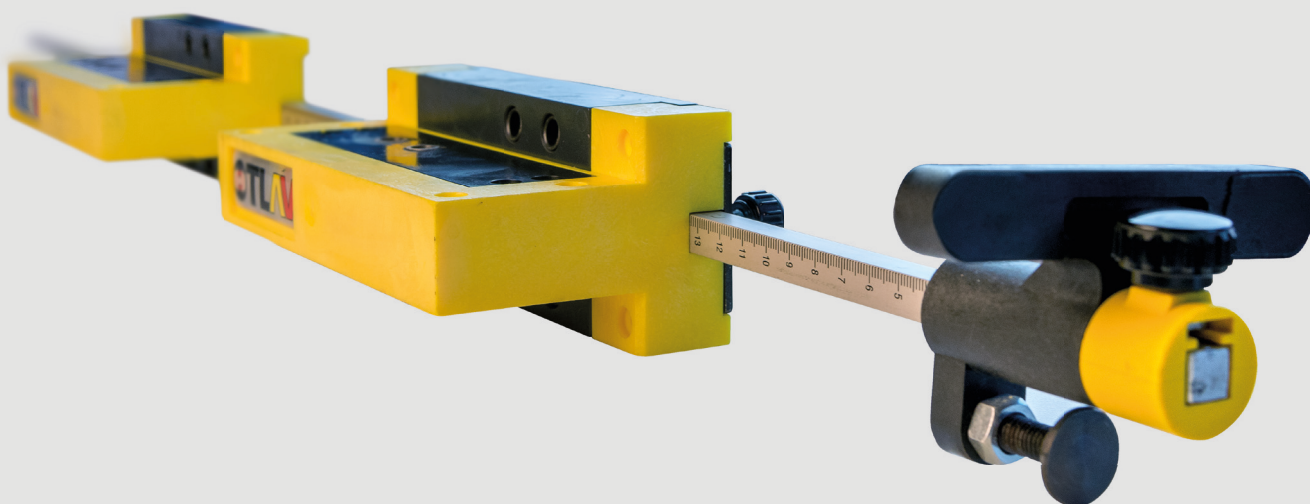


MODULAR ROD

ACCURACY, SPEED AND FLEXIBILITY



Unlike the standard hinge drilling systems, with MODULAR ROD, thanks to the device which can lodge two or three special tools that permit the separate door and frame drilling for the subsequent hinge fitting, it is not necessary to place the door on the frame; so that it is possible to prepare two separate lines to produce the doors, **that is to say one for producing the shutters and one for the frames.**

The **special symmetric shape** of the jig

and the reversible stop ensure the same rod can be used both for **doors and frames whether left or right.**

The use of the shims finally permits to adapt the jigs in case it would be necessary to increase or decrease the drilling distances respect to door or frame.

The MODULAR rod jigs are customized according to the kind of frame, to the type of hinge, to the position and angle of the pins as to the door or frame.

MODULAR ROD

ACCURACY, SPEED AND FLEXIBILITY

1 • The modular construction permits to use the same jigs, by replacing only the blocks, to fix different kinds of Otlav hinges.

2 • The millimetric rod allows the correct positioning of the jigs on the frames and on the doors.

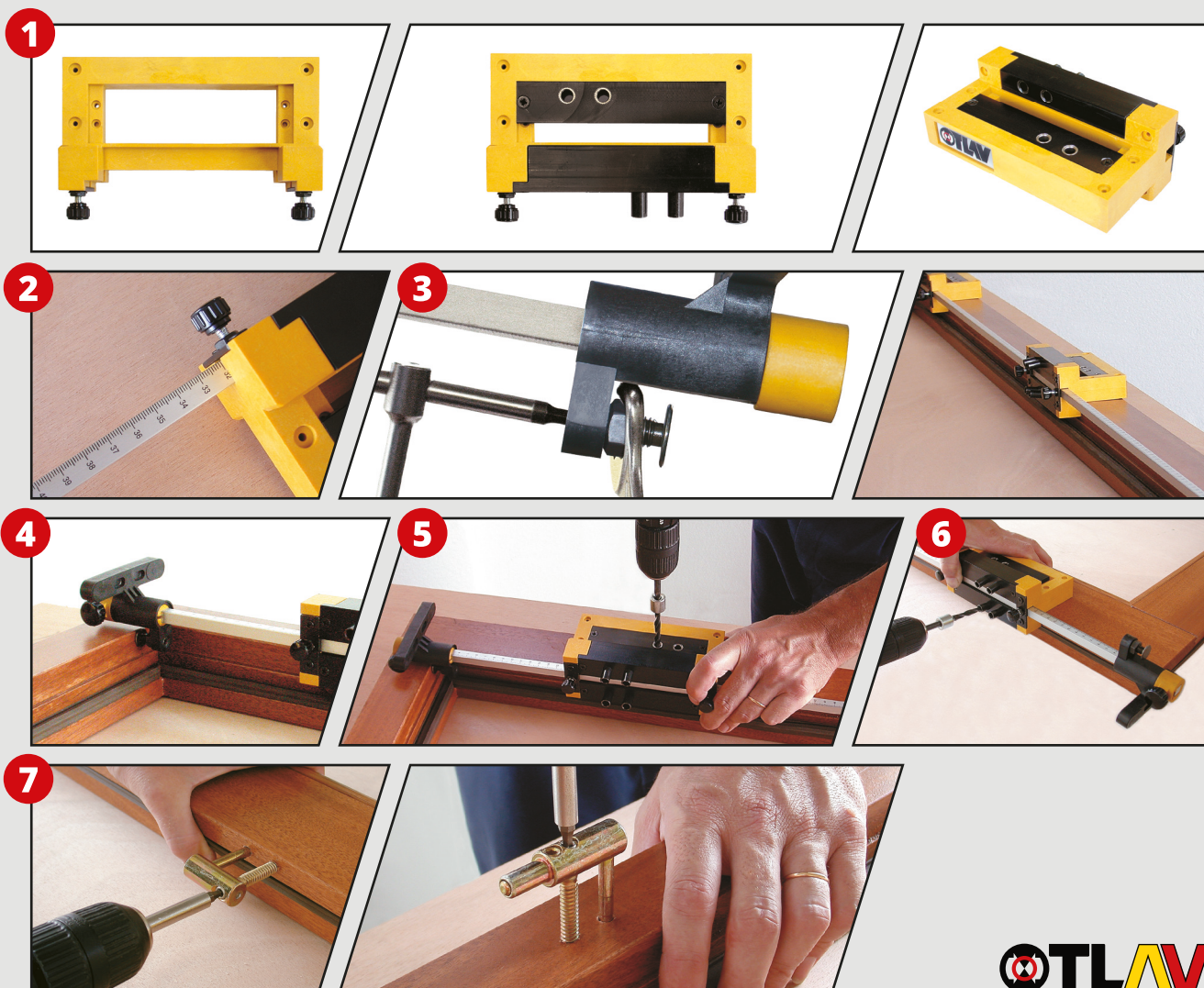
3 • Duly adjusted, the reversible stop permits to position the rod always with a micrometric precision, in different times both on the frames and on the doors.

4 • The first, easy action to drill the frame, is the correct reversible stop Positioning on the frame reference.

5 • Successively proceed by drilling the frame.

6 • As for the door the process is the same, the correct reversible stop Positioning on the door reference, is the first operation to be done while drilling.

7 • It is then easy to proceed by fitting both the male and the female parts.



MODULAR ROD

ACCURACY, SPEED AND FLEXIBILITY



CODE	DESCRIPTION	PCS	PRICE PER PIECE
MU8XXXXXXXXX	Customized jig for installation of OTLAV hinges equipped with: millimeter rod, reversible stop, 3 drilling jigs and if needed shims PP160020ZN04. For inquiries you are requested to forward the dimensioned technical drawing of shutter and frame as per sketch here below.	1	On demand

- A: Light between frame and door.
B: First interior frame rabbet.
C: Overlapping shim between door and frame.
D: Overlapping between door and frame.
E: Drilling angle for female pin.
F: Axis position male hinge referred to rabbet.
G: Axis position female hinge referred to door surface.

