

THE WORLD OF **PVC**



 **OTLAV**
dal 1956

*Since **1956**, thanks to our hinges, more than **1,000,000,000**
doors are opening **in 80 countries** all over the world.*



COMPANY

OTLAV S.p.A produces and sells hinges for doors and windows and other accessories for frames.

Founded in 1956 by entrepreneur Angelo Padovan, Otlav has produced **more than 2,2 billion of hinges**.

Thanks to almost 100 filed patents, Otlav ensures high quality standards and is present with its wide range of products in more than **80 countries worldwide**.

OTLAV new factory was inaugurated in 2007, in Via Angelo Padovan 2 in Santa Lucia di Piave (TV), in an area of 45,000 square meters, 19,500 of which are covered.

Following the opening of the first office in March 1956, OTLAV has nowadays found its perfect location to face the challenges of the new millennium. "OAMH" "Otlav Automatic Material Handling" is a project developed after five years of research and studies all around the world; a technological jewel created by designing at first the best logistical location, and then a subsequent lay out, and eventually the container to cover these structures: an unmistakable technological masterpiece, which is 20 meters high.

Rationalization of space, optimization of logistics and integrated use of automation: all of these account for respectively the flow or transportation of materials and the streaming of information. The goal is to cut costs by making the produced hinges increasingly competitive with an unparalleled level of quality.

OTLAV group companies



In 1990 Otlav creates Myrtus in Maniago (PN), Friuli. The company is specialized in galvanic treatments.



Founded 2002 in Romania is focused on some high-tech producing processes.



As required by European regulations and by Regulation (EU) No. 305/2011 all OTLAV hinges are subjected to stringent resistance tests to check performance both during the design phase and regularly during manufacturing. The I.U.S. (Intensive Use Simulator) is the testing system used in the OTLAV Test Laboratories.

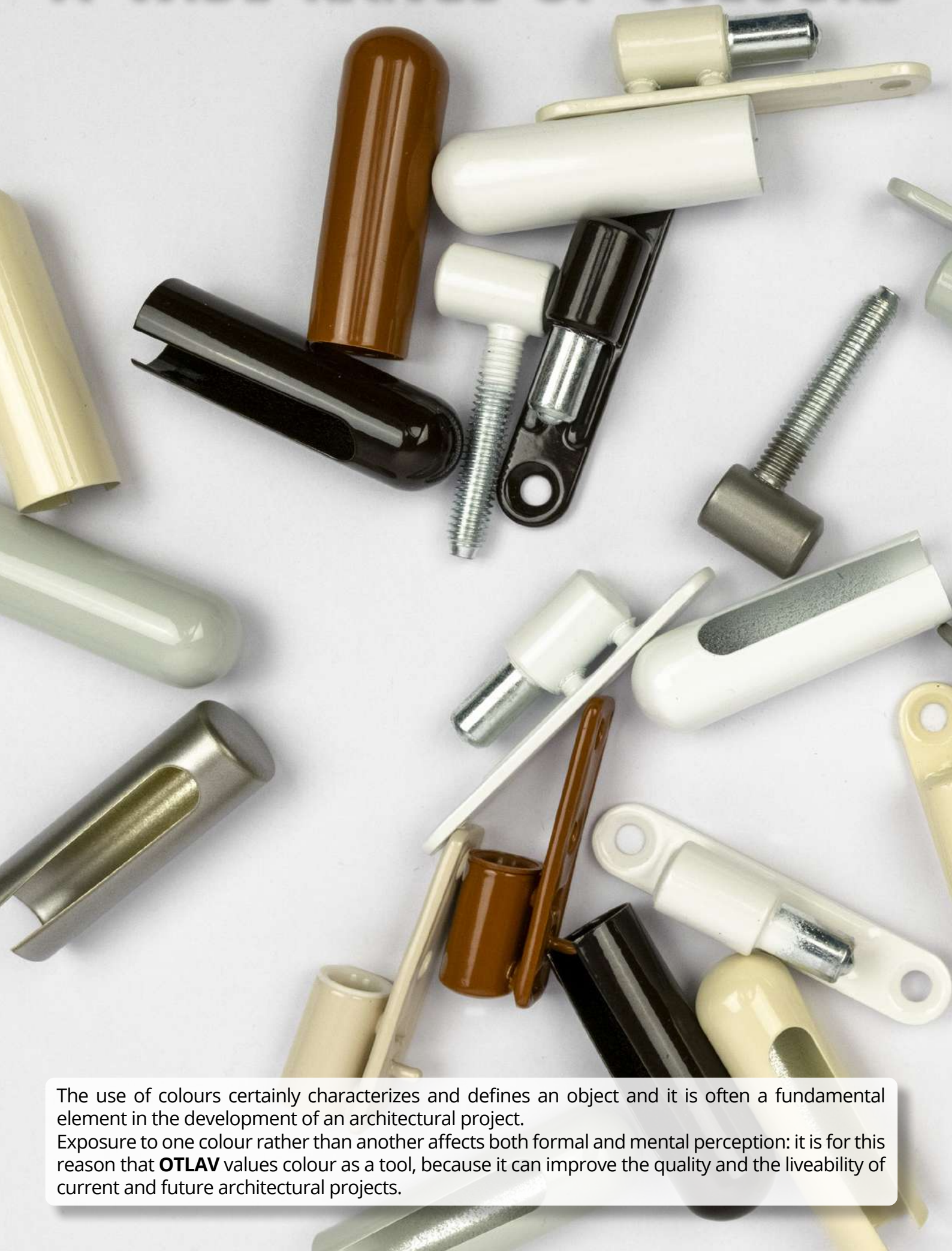
EC Certificates and Performance Declarations

Tests on the hinges are also carried out at external bodies able to certify that the company manufactures according to rigid, systematically monitored production plans and that the products pass the tests envisaged by the standard UNI EN 1935/2004: they are thereby able to issue, if needed, the CE certificate or certify the data provided by OTLAV in the "performance declarations".




View of the OTLAV test laboratories I.U.S. (Intensive Use Simulator)

A WIDE RANGE OF COLOURS



The use of colours certainly characterizes and defines an object and it is often a fundamental element in the development of an architectural project. Exposure to one colour rather than another affects both formal and mental perception: it is for this reason that **OTLAV** values colour as a tool, because it can improve the quality and the liveability of current and future architectural projects.

- 
- The background of the image features a variety of OTLAV window hinges in different colors and finishes, including white, silver, and black. A color chart with numerous color swatches is also visible, with some labels like 'Weißgrün', 'Kobaltblau', 'Rubinrot', 'Purpurrot', 'Lachs', 'Schwarz', 'Graubeige', 'Norzissengelb', 'Sandgelb', 'Maisgelb', 'Grünbeige', and 'RAL 4011'.
- P0** Dark Brown plastified, polished
 - P1** Plastified RAL 1015, polished
 - P2** Plastified RAL 9005, semipolished
 - P3** Plastified RAL 9010, polished
 - P4** Blue-white plastified
 - P9** Plastified RAL 7035, polished
 - PD** Plastified RAL 1013, polished
 - PE** Pinky beige plastified, polished
 - PG** Wrought black plastified
 - PI** Plastified RAL 9016, semipolished
 - PK** Bronze plastified
 - PU** Plastified RAL 8003, polished
 - 4Y** Champagne varnishing
 - 9A** Plastified RAL 9001, polished
 - 9F** F9 Helium grey plastified
 - 9N** Matt black plastified, metal effect
 - 9P** Plastified RAL 9016, matt
 - 9T** Plastified RAL 7016

OTLAV has developed a wide and well defined range of coloured hinges for PVC windows and doors, available as standard products, for minimum quantities or on request for particular production requirements. This is a deliberate decision to keep pace with the needs of both construction companies and designers.

R2 ROLLACTA



Designed to fulfill modern design needs and high quality manufacturing standards, Rollacta is the ideal solution for uPVC doors.

The special **cylindrical shape** blends seamlessly with sash and frame **for elegant door** design solution and always leaves **the seal unscathed** ensuring high thermal and acoustic insulation values.

FINISHING



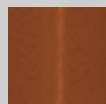
White Plastified
RAL 9016



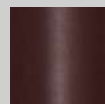
White Plastified
RAL 9010



Grey Plastified
9F



Clay Brown
Plastified RAL 8003



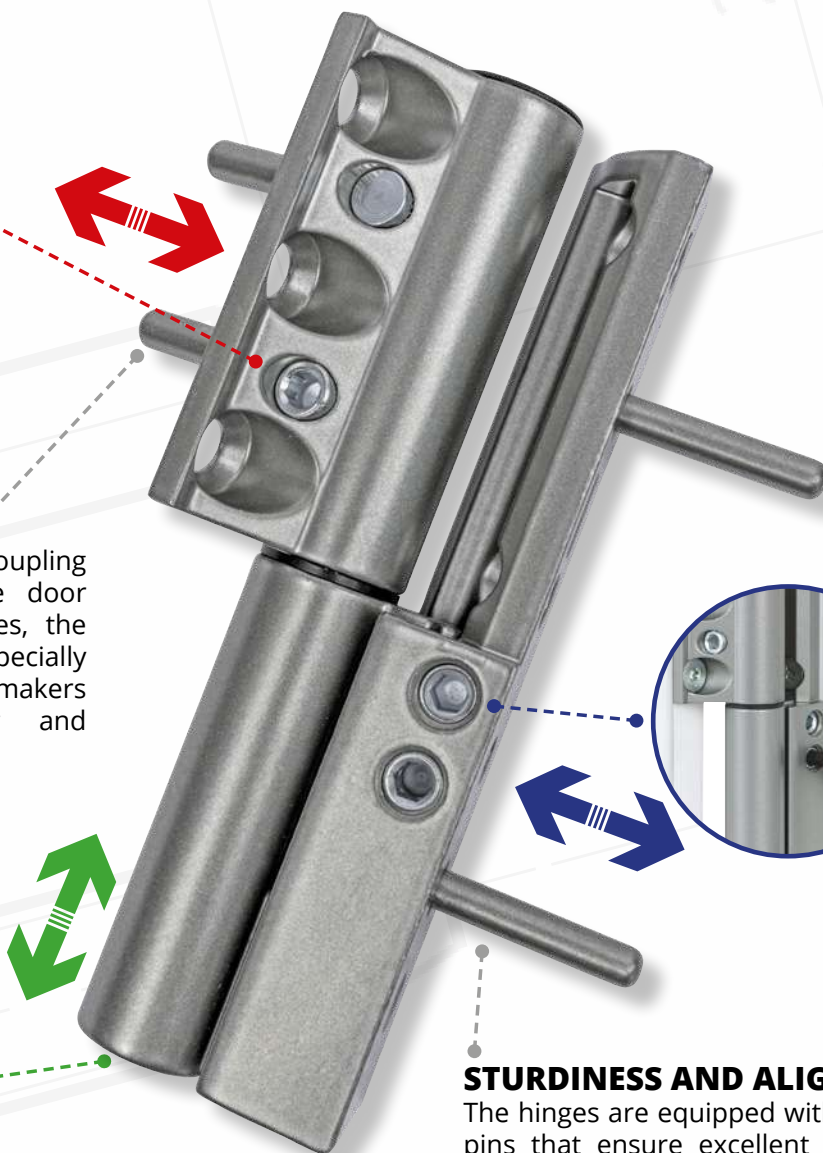
Brown Plastified

R2 Rollacta



EASY TO INSTALL

Thanks to a special coupling system directly on the door profile with 5 mm holes, the Rollacta hinge is especially convenient for door makers because allows easy and economical installation.



STURDINESS AND ALIGNMENT

The hinges are equipped with positioning pins that ensure excellent stability and perfect alignment on both door and frame.

 **CAPACITY***
100 Kg

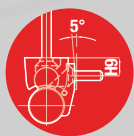
ADJUSTMENTS

- Height
- Side
- Depth

Available in 6 different versions that enable the use on the most common PVC profiles



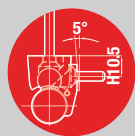
Height 9 mm
Not Inclined



Height 9 mm
Inclined 5°



Height 10,5 mm
Not Inclined



Height 10,5 mm
Inclined 5°



Height 12 mm
Not Inclined



Height 12 mm
Inclined 5°

* Tested with 90x210 cm doors - For more information on the number of hinges to be used according to the weight and dimension of the door, please see the loading charts available on the website www.otlav.it.

R3 ROLLACTA



Designed to fulfill modern design needs and high quality manufacturing standards, Rollacta is the ideal solution for uPVC doors.

The special **cylindrical shape** blends seamlessly with sash and frame **for elegant door** design solution and always leaves **the seal unscathed** ensuring high thermal and acoustic insulation values.

FINISHING



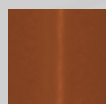
White Plastified
RAL 9016



White Plastified
RAL 9010



Grey Plastified
9F



Clay Brown
Plastified RAL 8003



Brown Plastified

R3 Rollacta

EASY TO INSTALL

Thanks to a special coupling system directly on the door profile with 5 mm holes, the Rollacta hinge is especially convenient for door makers because allows easy and economical installation.



STURDINESS AND ALIGNMENT

The hinges are equipped with positioning pins that ensure excellent stability and perfect alignment on both door and frame.

CAPACITY*
120 Kg

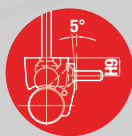
ADJUSTMENTS

- Height
- Side
- Depth

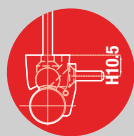
Available in 6 different versions that enable the use on the most common PVC profiles



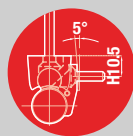
Height 9 mm
Not Inclined



Height 9 mm
Inclined 5°



Height 10,5 mm
Not Inclined



Height 10,5 mm
Inclined 5°



Height 12 mm
Not Inclined



Height 12 mm
Inclined 5°

* Tested with 90x210 cm doors - For more information on the number of hinges to be used according to the weight and dimension of the door, please see the loading charts available on the website www.otlav.it.

473 TRIXACTA



TRIXACTA guarantees top quality and reliable performance, and has passed CE tests for a **capacity of 160 kg.**

TRIXACTA facilitates rapid installation on **European groove profiles with 13mm axis**, adjustable on three axes by means of a single 4mm hex wrench. The end caps are available in several finishes to provide versatile, elegant and modern design.

FINISHING

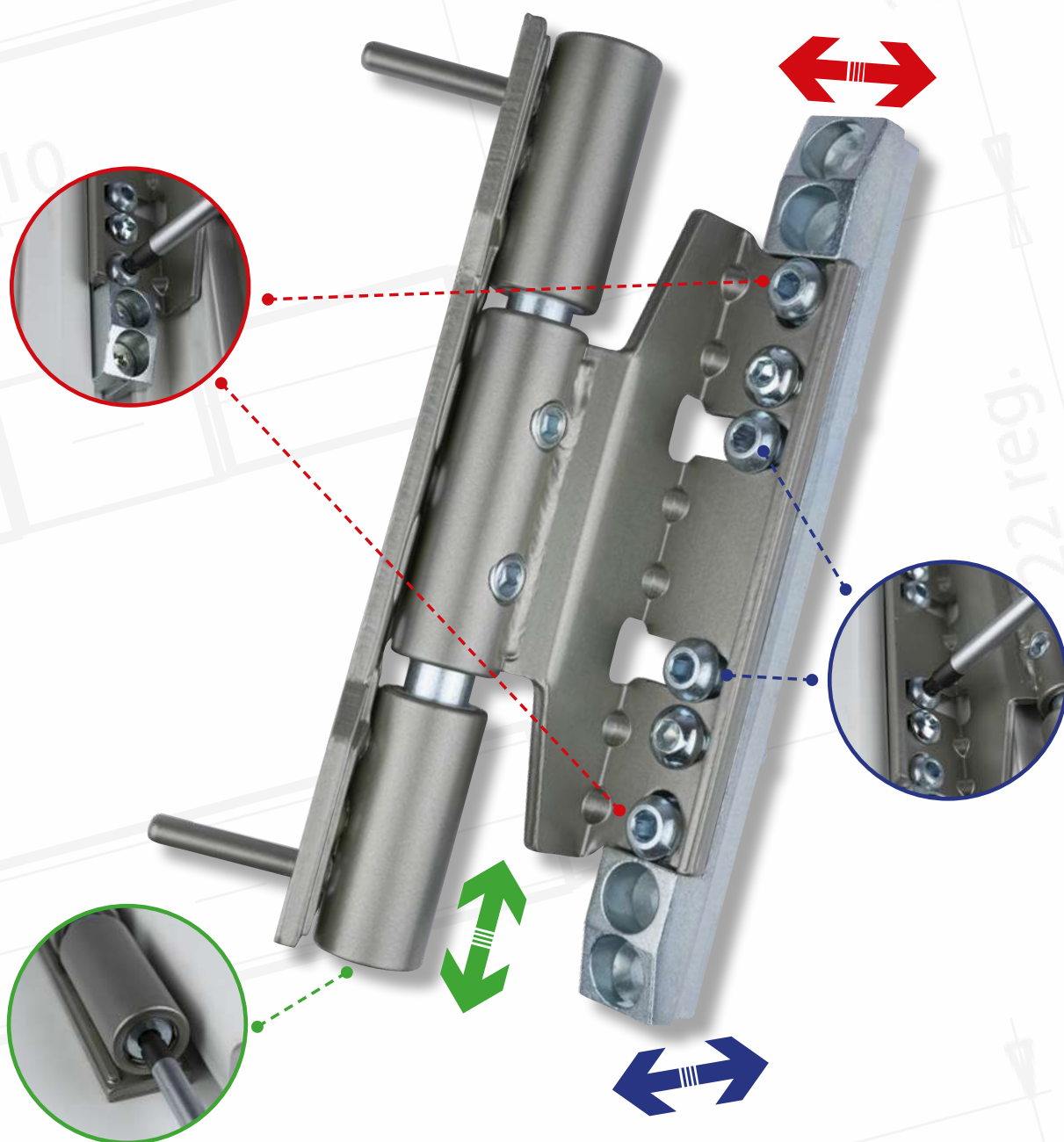


White Plastified
RAL 9016



Grey Plastified
9F

473 Trixacta



 **CAPACITY***
160 Kg

ADJUSTMENTS

- Height
- Side
- Depth

* Tested with 90x210 cm doors - For more information on the number of hinges to be used according to the weight and dimension of the door, please see the loading charts available on the website www.otlav.it.

483 BIXACTA



CE certified hinge, the door part is suitable to be fitted in the European groove **axis 13 mm or axis 9 mm with 12 mm clearance**. The male part is available with three different types of pegs and two plate models. Discreet, elegant hinge distinguished by ease of installation and **three-dimensional adjustment** with the door fitted. Available in different kind of finishing, suitable for wooden door equipped with European groove.

FINISHING



Zinc plated



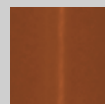
White Plastified
RAL 9016



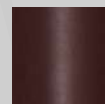
White Plastified
RAL 9010



Grey Plastified
9F



Clay Brown
Plastified RAL 8003



Brown Plastified

483 Bixacta



ADJUSTMENTS

- Height
- Side
- Depth

CAPACITY*
80 Kg



MALE
Pegs Ø8x26



MALE
Pegs Ø5x26



MALE
No pegs



MALE
Standard plate



MALE
Reduced plate

CAPS



838Ø17
Aluminium



838Ø18
Brass



838Ø18
Nylon



839Ø18
Brass



846Ø17
Aluminium

* Tested with 90x210 cm doors - For more information on the number of hinges to be used according to the weight and dimension of the door, please see the loading charts available on the website www.otlav.it.

487 URSUS-PVC



URSUS-PVC is made up of a female with 3 pins and a male part with plate and 4 fixing holes: stability, capacity and perfect alignment of the door are guaranteed; this hinge is suitable for heavy duty doors and for particularly large doors. Discreet and elegant hinge distinguished by ease of installation and **three-dimensional adjustment** with the door fitted. Suitable also for wooden door.

FINISHING

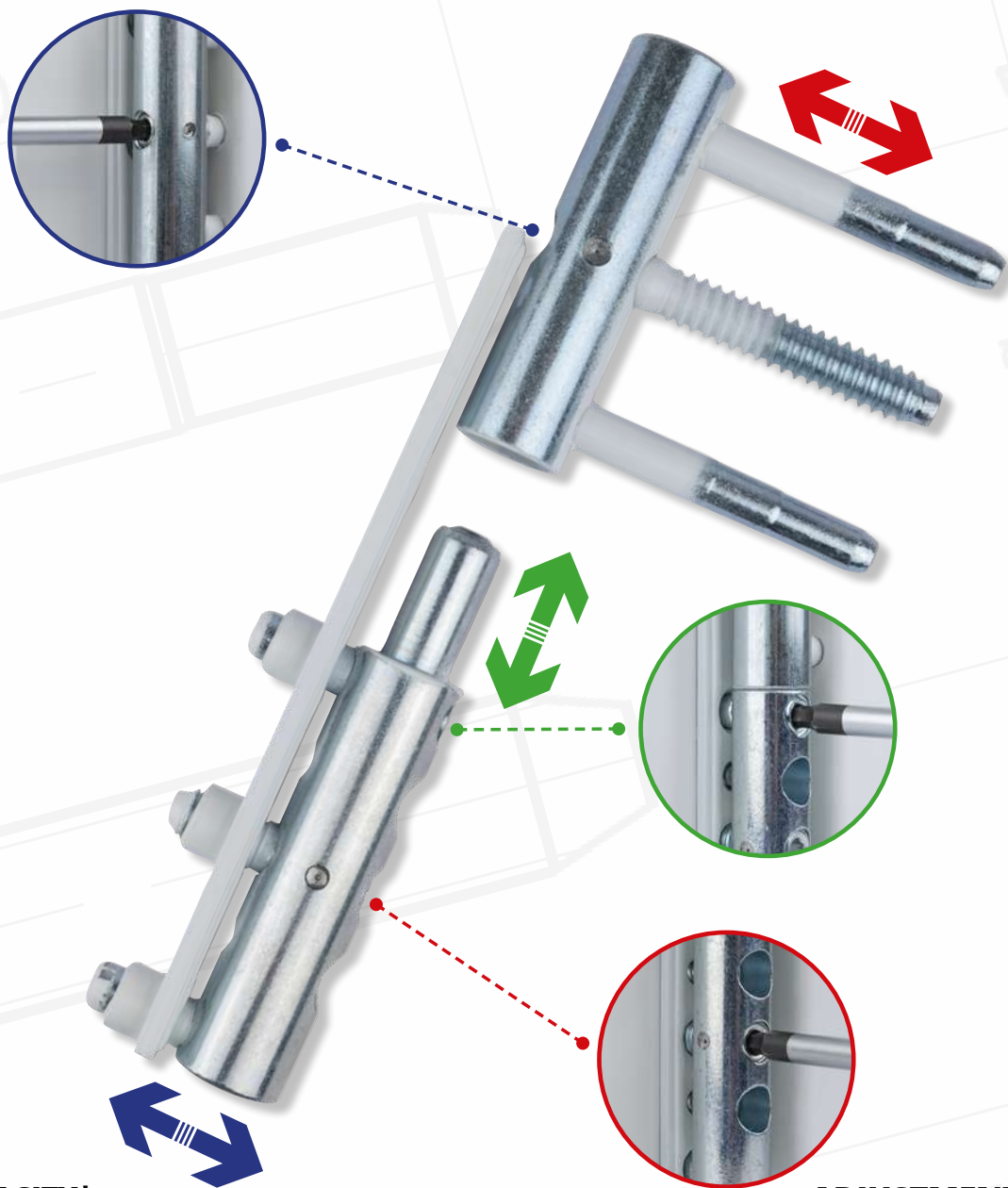


White Plastified
RAL 9016



Plastifié Gris
9F

487 URSUS-PVC



 **CAPACITY***
120 Kg

ADJUSTMENTS

- Height
- Side
- Depth

* Tested with 90x210 cm doors - For more information on the number of hinges to be used according to the weight and dimension of the door, please see the loading charts available on the website www.otlav.it.

486 MIXACTA 3D



Discreet, elegant hinge distinguished by ease of installation and three-dimensional adjustment with the door fitted.
Available in diameters 16 and 14mm.

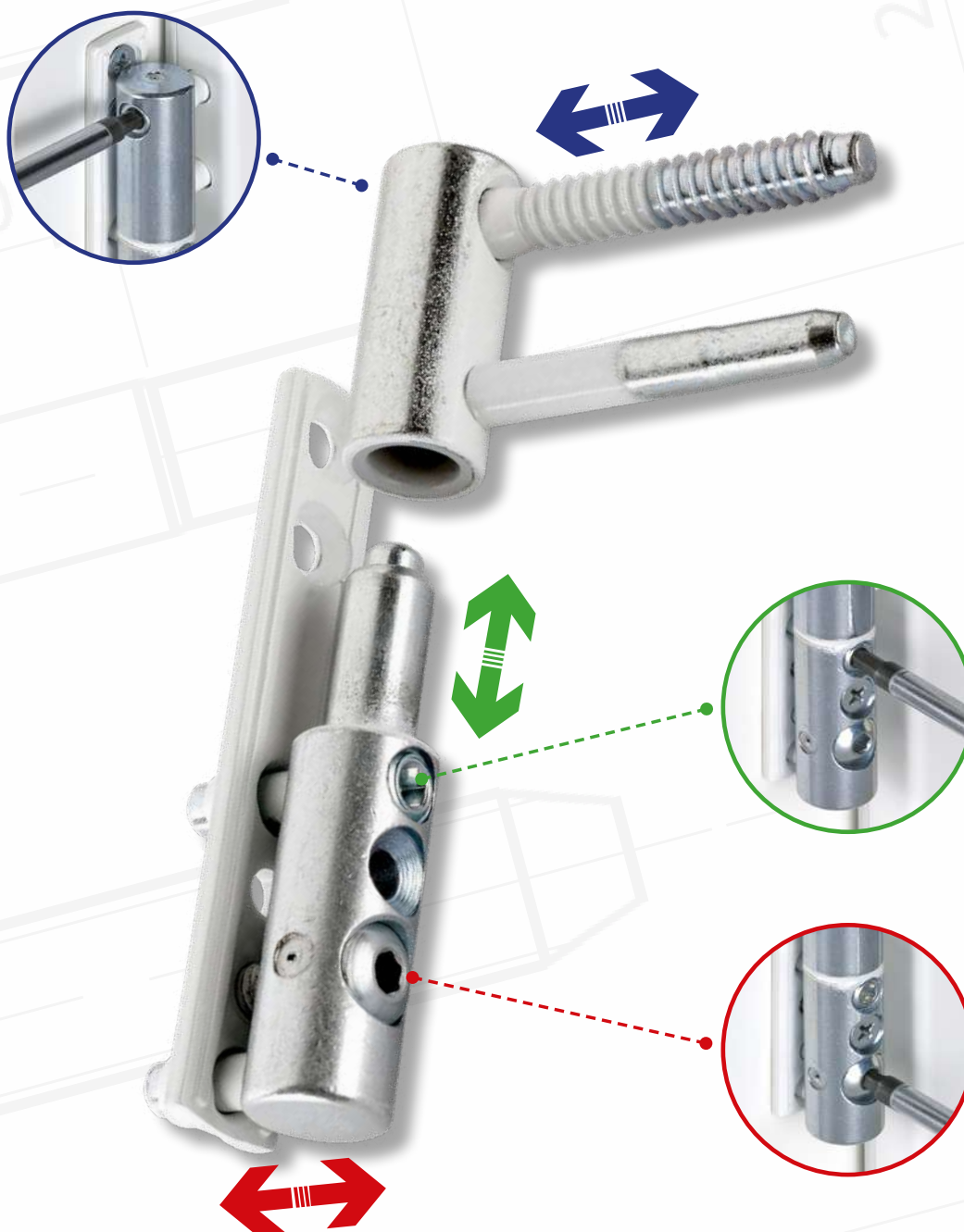
FINISHING



CAPS for Ø14



486 Mixacta 3D



CAPACITY*

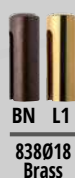
Ø16: 80 Kg

Ø14: 60 Kg

ADJUSTMENTS

- Height
- Side
- Depth

CAPS for Ø16



* Tested with 90x210 cm doors - For more information on the number of hinges to be used according to the weight and dimension of the door, please see the loading charts available on the website www.otlav.it.

482 MIXACTA 2D



Discreet, elegant hinge distinguished by ease of installation and adjustment on two axes with door fitted. The male part is available with three different types of pegs and two plate models. Mixacta 482 is available with a diameter of Ø16 and on demand can be supplied with a diameter 14 mm.

FINISHING



Ø16
Zinc plated

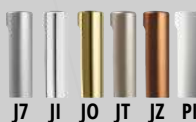


Ø16
White Plated
RAL 9016



Ø14
White Plated
RAL 9010

CAPS for Ø14



838Ø15
Alluminio



838Ø16
Ottone



838Ø16
Nylon



839Ø16
Ottone



846Ø15
Alluminio

482 Mixacta 2D



ADJUSTMENTS

- Height
- Side



CAPACITY*

Ø16: 100 Kg

Ø14: 60 Kg



MALE
Pegs Ø8x26



MALE
Pegs Ø5x26



MALE
No pegs



MALE
Standard plate



MALE
Reduced plate

CAPS for Ø16



838Ø17
Aluminium



838Ø18
Brass



838Ø18
Nylon



839Ø18
Brass



846Ø17
Aluminium

* Tested with 90x210 cm doors - For more information on the number of hinges to be used according to the weight and dimension of the door, please see the loading charts available on the website www.otlav.it.

495 EXACTA PVC



PVC door hinge, adjustable on three axes with door fitted, also available as anti-unthreading version.

FINISHING



White Nylon (Ral 9010)



Dark Brown Nylon

495 Exacta PVC



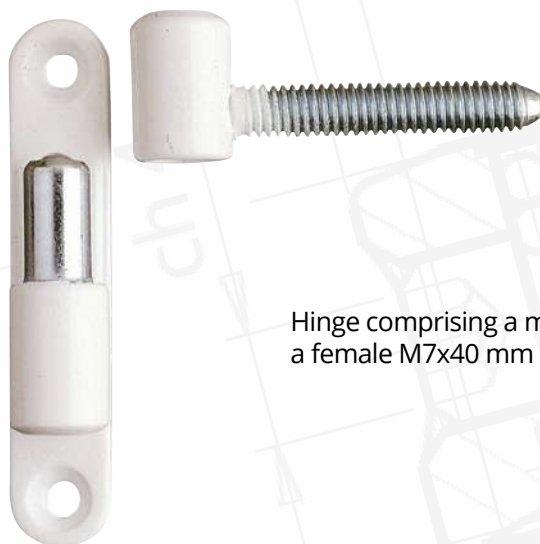
 **CAPACITY***
80 Kg

CE

ADJUSTMENTS

- Height
- Side
- Depth

P09 Ø13



Hinge comprising a male part on a plate and a female M7x40 mm pin.

FINISHING



White RAL9016



White RAL9010



Grey Plastified RAL7035



Zinc Plated



Yellow Galvanised

CAPS



Polished Varnished

811 Ø14

Brass cap



Polished Varnished

809 Ø14

Brass cap



RAL9010

815 Ø14,5

Nylon cap for P09 zinc plated



RAL9010

818 Ø15

Nylon cap for P09 plastified

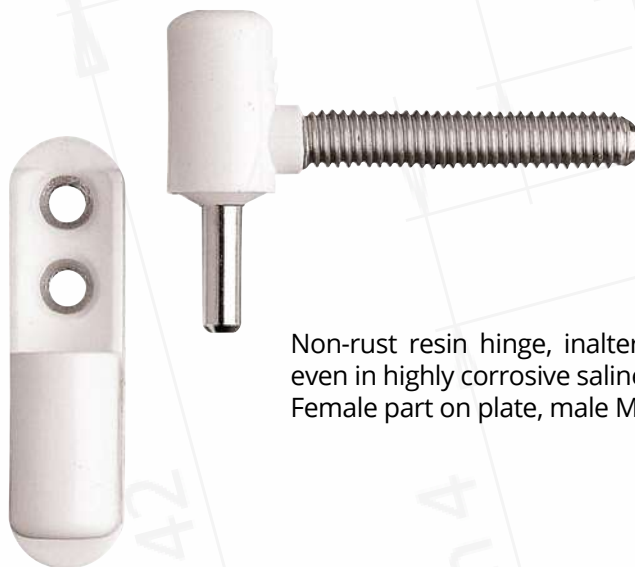


RAL9016



RAL8003

P19 Ø13



Non-rust resin hinge, inalterable over time, even in highly corrosive saline environments. Female part on plate, male M7x43 mm pin.

FINISHING



White Resin

P36 Ø13



Hinge comprising a female part on a plate with nylon bush, to provide excellent pin and collar sliding and conceal any play between the male and female parts.
Male M7x40 mm pin.

FINISHING



White
RAL9016



White
RAL9010



Grey Plastified
RAL7035



Grey Plastified 9F

P38 Ø13



Hinge comprising female part on plate and male M7x40mm pin.
The nylon bush ensures excellent pin sliding.

FINISHING



White
RAL9016



White
RAL9010



Grey Plastified
RAL7035



Grey Plastified 9F



Black Plastified



Clay Brown Plastified
(Ral 8003)



Rosy Beige
Plastified



P39 Ø13



Hinge comprising a female part on a plate and a male wasistas M7x40 mm pin.

FINISHING



White
RAL9016



White
RAL9010



P44 Ø14,5



Non-rust resin hinge, inalterable over time, even in highly corrosive saline environments. Female part on plate, male M7x40 mm pin.

FINISHING



White Resin

P50 Ø15



Diameter 15 mm hinge suitable for PVC windows, available in several versions and finishes.

MODELS



Pin M7x40
Male part on plate
(2 or 3 holes)



Pin M7x50
Male part on plate
(2 or 3 holes)



Pin M8x37
Male part on plate
(2 or 3 holes)



Pin M8x50
Male part on plate
(2 or 3 holes)



Male and female
parts on plate
(2 or 3 holes)

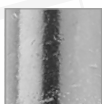


STAINLESS STEEL
Pin M7x40

FINISHING



Brown
Plastified



Zinc Plated



White
RAL9010

CAPS



820 Ø16
Nylon cap for P50 Ø15 White RAL9010

POSSIBLE COMBINATIONS



MALE
URSUS Ø16



MALE
EXACTA Ø16



MALE
BIXACTA Ø16
PEGS Ø8x26



MALE
BIXACTA Ø16
PEGS Ø5x26



MALE
BIXACTA Ø16

MALE

FEMALE



URSUS Ø16
3D adjustable hinge with 5 pins



EXACTA Ø16
3D adjustable hinge with 4 pins



MIXACTA 482
2D adjustable hinge with plate



MIXACTA 482
2D adjustable hinge with plate



MIXACTA 482
2D adjustable hinge with plate



FEMALE
EXACTA Ø16



MIXACTA 483
3D adjustable hinge for profiles
with European groove with 13 mm axis



MIXACTA 483
3D adjustable hinge for profiles
with European groove with 13 mm axis



BIXACTA 483
3D adjustable hinge for profiles
with European groove with 13 mm axis



BIXACTA 483
3D adjustable hinge for profiles
with European groove with 13 mm axis



BIXACTA 483
3D adjustable hinge for profiles
with European groove with 13 mm axis



FEMALE
BIXACTA Ø16
AXIS 13 mm



MIXACTA 483
3D adjustable hinge for profiles
with European groove with 9 mm axis



MIXACTA 483
3D adjustable hinge for profiles
with European groove with 9 mm axis



BIXACTA 483
3D adjustable hinge for profiles
with European groove with 9 mm axis



BIXACTA 483
3D adjustable hinge for profiles
with European groove with 9 mm axis



BIXACTA 483
3D adjustable hinge for profiles
with European groove with 9 mm axis



FEMALE
BIXACTA Ø16
AXIS 9 mm



dal 1956

Via Angelo Padovan, 2
31025 - Santa Lucia di Piave (TV) - Italy
tel. +39 0438 4611 fax +39 0438 439252
www.otlav.it info@otlav.it